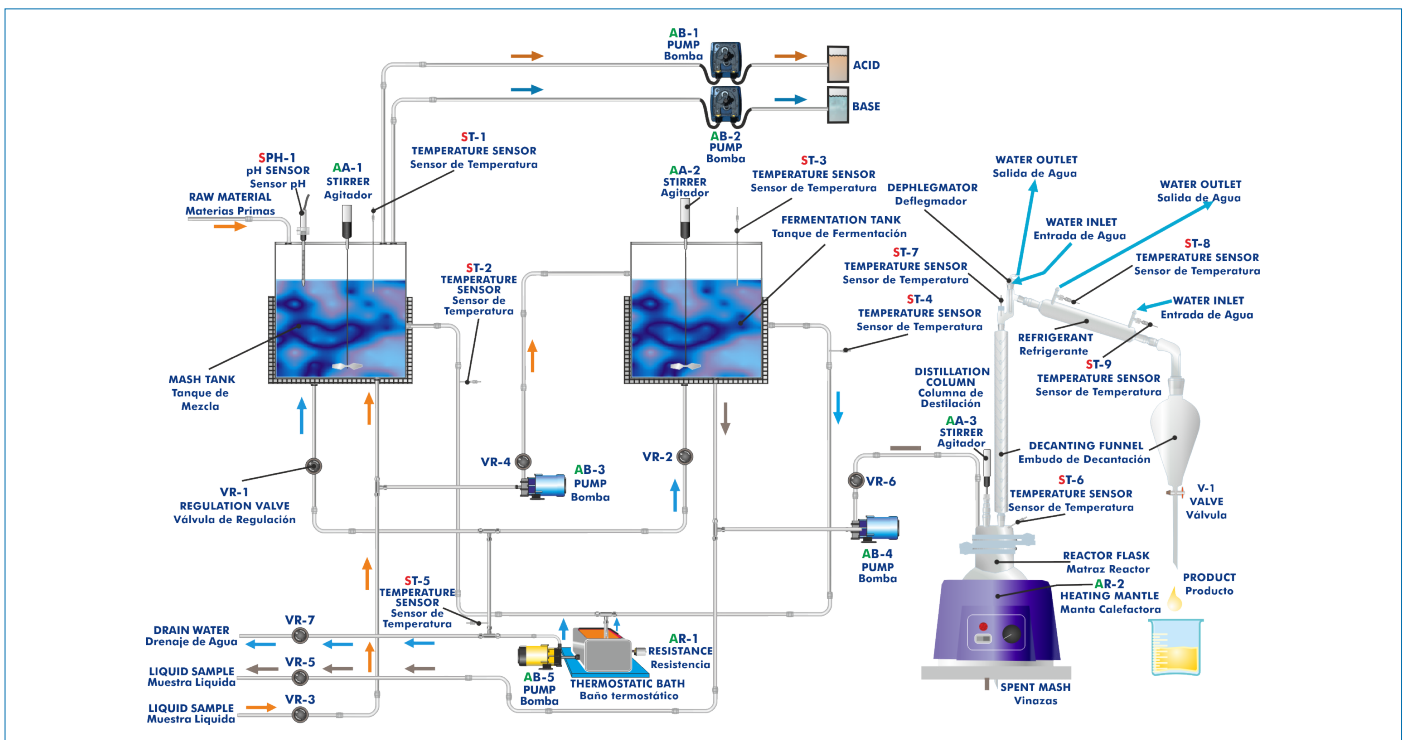


Electronic console

PROCESS DIAGRAM AND UNIT ELEMENTS ALLOCATION



Certificate of Approval of the
Quality Management System



European Union Certificate
(total safety)



UL and CSA Regulations
(All our products are manufactured according
to current UL and CSA regulations)



Certificate of Approval of the
Environmental Management System



Worlddidac Association
Certificate of Membership

INTRODUCTION

In the past, fossil fuels were essential for transportation, relying on the abundant and less expensive petroleum supply by then. But in last few decades, due to the increasingly expensive petroleum supply, there has been considerable interest in the development of fuels generated from renewable resources, that is to say, biofuels.

Le terme biocarburant est attribué à tout carburant alternatif dérivé de matières organiques, telles que les cultures énergétiques (maïs, sucre, sorgho et fruits, entre autres), les résidus de culture ou la biomasse des déchets.

Among all biofuels, ethanol has been trusted as an alternate fuel for the future, being already produced on a great scale worldwide. In this sense, bioethanol is expected to be one of the dominating renewable biofuels in the transport sector within the coming years.

The Bioethanol Process Unit, "EBEB", has been designed to perform a wide range of didactic experiments. Various processes, such as mashing, fermentation and distillation, can be studied.

GENERAL DESCRIPTION

The Bioethanol Process Unit, "EBEB", has been designed to study and control the bioethanol production process on a laboratory scale. This unit allows to monitor and examine all the important processes, from liquefaction and saccharification of the raw materials, to the conversion of sugar into ethanol and distillation.

The unit consists of three main components: a mash tank, a fermentation tank and a distillation unit.

All vessels, valves and other accessories in contact with the process materials (except the distillation unit) are made of stainless steel. The distillation unit is made of borosilicate glass. Sight glasses are made of Neoceram glass.

The mash tank includes an inlet at its upper cover for filling water, starch and enzymes. Its base is slightly inclined towards a port for draining the solution or pumping it into the fermentation tank. During the mashing process the starch of the raw materials is turned into glucose. The addition of the alpha-amylase enzyme enables the liquefaction of the starch slurry. Subsequently, saccharification starts by adding the glucoamylase enzyme. A temperature sensor and a pH meter measure the properties of the mixture in the tank. The pH value is adjusted by adding acid and base.

After saccharification the mash is pumped into the fermentation tank. The fermentation tank base is inclined slightly towards a port for draining the solution or pumping it into the distillation unit. The fermentation process takes place after adding yeast, producing ethanol and CO₂. A sensor measures the temperature of the mixture in the tank.

Both tanks are heated indirectly with hot water through a jacket and stirred constantly. Besides, they are equipped with a sight glass so that the process can be observed and monitored. Two temperature sensors are located at the outlet of the tanks' jacket.

The mash tank and the fermentation tank are thermally controlled by hot water, which is heated by a system consisting of a thermostatic bath and a pump. An additional temperature sensor is located in the thermostatic bath.

After the fermentation process, the preparation is pumped into the distillation unit. It contains a heating mantle, a stirrer, a distillation column, a cold finger (dephlegmator), a condenser and a decanting funnel. Four temperature sensors are located at different points of the distillation unit.

SPECIFICATIONS

Anodized aluminum frame and panels made of painted steel.

The unit includes wheels to facilitate its mobility.

Main metallic elements made of stainless steel.

Diagram in the front panel with distribution of the elements similar to the real one.

All the vessels, valves and other accessories in contact with process materials (except the distillation unit) are made of stainless steel. The distillation unit is made of borosilicate glass. Sight glasses are made of Neoceram glass.

The "EBEB" unit mainly consists of:

Mash tank:

Cylindrical vessel made of stainless steel, with an inlet at the upper cover to load the water, raw material and starch, jacket for process heating, stirrer and a sight glass made of Neoceram.

The base of the vessel is inclined slightly towards a port for draining the solution or pumping it into the fermentation tank.

Volume: 5 l.

Fermentation tank:

Cylindrical vessel made of stainless steel with a jacket for process heating, stirrer and a sight glass made of Neoceram.

The vessel has a base inclined slightly towards a port for draining the solution or pumping it into the distillation unit.

Volume: 5 l.

Distillation unit:

Different elements made of borosilicate glass of high thermal and mechanical resistance, as well as perfect chemical inertia. It includes:

Heating mantle, 800 W.

Reactor flask with discharge stopcock, volume: 5 l.

Reactor lid, with four inlets, especially designed for this system.

Vigreux type distillation column.

Stirring rod with stirring lock that assures a perfect insulation of the system.

Cold finger (dephlegmator).

Liebig-West condenser with interchangeable fittings.

Decantation funnel of 500 ml.

Temperature tappings placed at key points of the system.

Two diaphragm pump to introduce the solution into the fermentation tank and the distillation unit, range: 0 – 3.8 l/min.

Nine "J" type temperature sensors:

Two temperature sensors located at the mash tank to measure the temperature of the mash inside the tank and the temperature at the outlet of the tank's jacket.

Two temperature sensors located at the fermentation tank to measure the temperature of the preparation inside the tank and the temperature at the outlet of the tank's jacket.

Four temperature sensors located at different points of the distillation unit.

Temperature sensor located at the hot water circulation system.

pH meter measures the pH of the mash inside the mash tank.

Hot water circulation system, including:

Pump.

Thermostatic bath.

Acid/base circuit system, including:

Two peristaltic pumps to introduce an acid or base solution into the mash tank, max. flow: 0 – 13 ml/min.

Two vessels to contain the acid and base solutions, volume: 1 l.

Seven valves:

Two needle valves are used to divert the hot water between the jacket of the mash tank and the jacket of the fermentation tank.

Two ball valves and two needle valves are used to drain the solution from the mash and fermentation tank or pump it into the fermentation tank and distillation unit.

Ball valve is used to drain the water for hot water circulation system.

Electronic console:

Metallic box.

Temperature sensor connectors. Digital display for the temperature sensors. Selector for the temperature sensors.

pH meter connector. Digital display for pH meter.

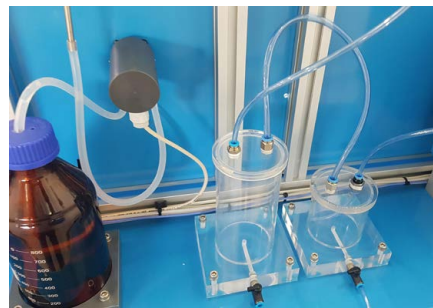
Three connectors for the stirrers. Three switches for the stirrers (one for the mash tank, other for the fermentation tank and another for the distillation unit).

Five switches for the pumps (two for the peristaltic pumps, two for the diaphragm pumps and one for the pump of hot water circulation system).

Two switches for the heating resistances (one for the thermostatic bath and another for the heating mantle).

Cables and accessories, for normal operation.

Manuals: This unit is supplied with the following manuals: Required Services, Assembly and Installation, Starting-up, Safety, Maintenance & Practices manuals.



EBEB detail

EXERCISES AND PRACTICAL POSSIBILITIES

- 1.- Familiarization with the individual steps required for bioethanol production.
- 2.- Familiarization with the plant components required for bioethanol production.
- 3.- Study of the effect of temperature on bioethanol purity.
- 4.- Study of the effect of pH on bioethanol yield.
- 5.- Study of the effect of mashing time on bioethanol yield.
- 6.- Study of the effect of fermentation time on bioethanol yield.
- 7.- Study of the use of different raw materials to produce bioethanol.
- 8.- Study of the effect of adding different types of yeast to the fermentation.

REQUIRED SERVICES

- Electrical supply: single-phase 200 VAC – 240 VAC/50 Hz or 110 VAC – 127 VAC/60 Hz.
- Water supply and drain.

DIMENSIONS AND WEIGHTS

EBEB:

Unit:

- Dimensions: 2000 x 650 x 1800 mm approx.
(78.74 x 25.59 x 70.86 inches approx.)
- Weight: 200 Kg approx.
(441 pounds approx.).

Electric console:

- Dimensions: 490 x 450 x 470 mm approx.
(19.29 x 17.71 x 18.50 inches approx.)
- Weight: 20 Kg approx.
(44 pounds approx.).

ADDITIONAL RECOMMENDED ELEMENTS (Not included)

- Hydrometer.

RECOMMENDED CONSUMABLES (Not included)

- Starch of the raw material.
- Alpha-amylase for the liquefaction process.
- Gluco-amylase for the saccharification process.
- Yeast for the fermentation process.
- H₂SO₄ / HCl to prepare of acid solution.
- NaOH to prepare of base solution.

SIMILAR UNITS AVAILABLE

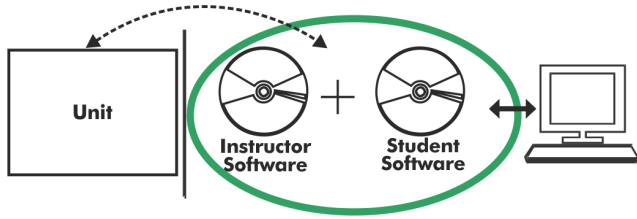
Offered in this catalog:

- EBEB. Bioethanol Process Unit.

Offered in other catalog:

- EBEC. Computer Controlled Bioethanol Process Unit.

EBEB/ICAI. Interactive Computer Aided Instruction Software:



With no physical connection between unit and computer, this complete software package consists of an Instructor Software (EDIBON Classroom Manager -ECM-SOF) totally integrated with the Student Software (EDIBON Student Labsoft -ESL-SOF). Both are interconnected so that the teacher knows at any moment what is the theoretical and practical knowledge of the students.

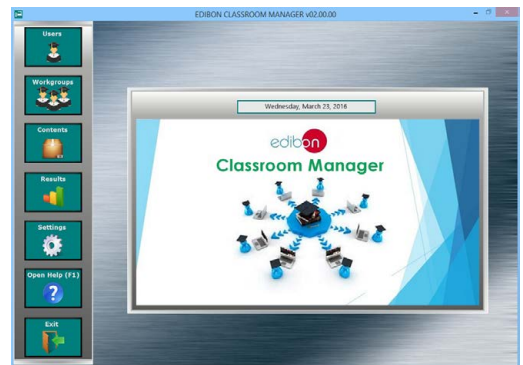
Instructor Software

- ECM-SOF. EDIBON Classroom Manager (Instructor Software).

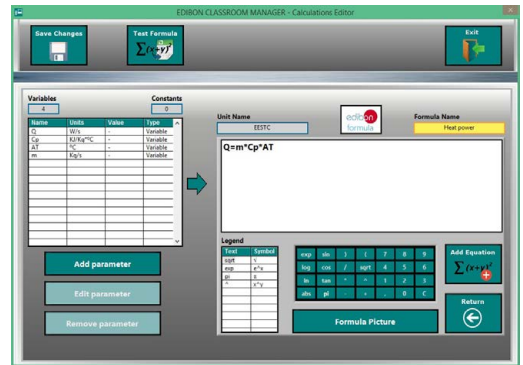
ECM-SOF is the application that allows the Instructor to register students, manage and assign tasks for workgroups, create own content to carry out Practical Exercises, choose one of the evaluation methods to check the Student knowledge and monitor the progression related to the planned tasks for individual students, workgroups, units, etc... so the teacher can know in real time the level of understanding of any student in the classroom.

Innovative features:

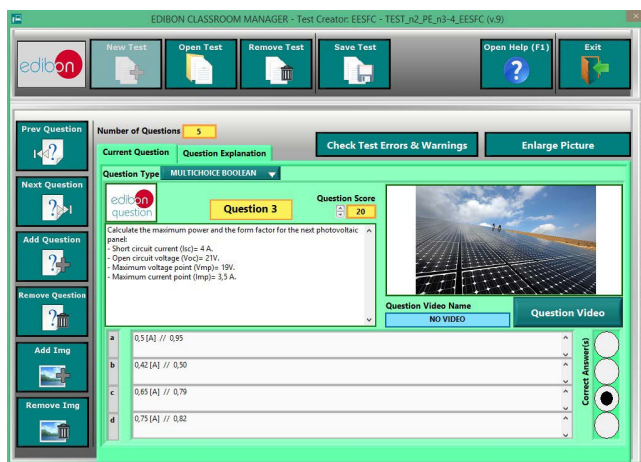
- User Data Base Management.
- Administration and assignment of Workgroup, Task and Training sessions.
- Creation and Integration of Practical Exercises and Multimedia Resources.
- Custom Design of Evaluation Methods.
- Creation and assignment of Formulas & Equations.
- Equation System Solver Engine.
- Updatable Contents.
- Report generation, User Progression Monitoring and Statistics.



ECM-SOF. EDIBON Classroom Manager (Instructor Software) Application Main Screen



ECAL. EDIBON Calculations Program Package - Formula Editor Screen



ETTE. EDIBON Training Test & Exam Program Package - Main Screen with Numeric Result Question



ERS. EDIBON Results & Statistics Program Package - Student Scores Histogram

Optional
Student Software

- ESL-SOF. EDIBON Student Labsoft (Student Software).

ESL-SOF is the application addressed to the Students that helps them to understand theoretical concepts by means of practical exercises and to prove their knowledge and progression by performing tests and calculations in addition to Multimedia Resources. Default planned tasks and an Open workgroup are provided by EDIBON to allow the students start working from the first session. Reports and statistics are available to know their progression at any time, as well as explanations for every exercise to reinforce the theoretically acquired technical knowledge.

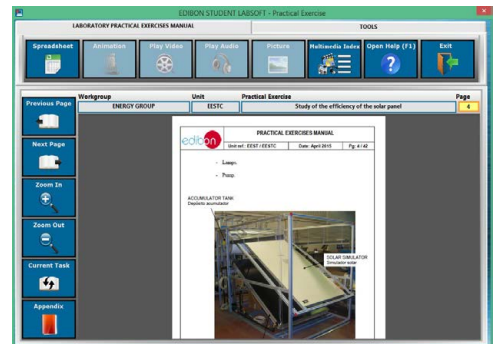
Innovative features:

- Student Log-In & Self-Registration.
- Existing Tasks checking & Monitoring.
- Default contents & scheduled tasks available to be used from the first session.
- Practical Exercises accomplishment by following the Manual provided by EDIBON.
- Evaluation Methods to prove your knowledge and progression.
- Test self-correction.
- Calculations computing and plotting.
- Equation System Solver Engine.
- User Monitoring Learning & Printable Reports.
- Multimedia-Supported auxiliary resources.

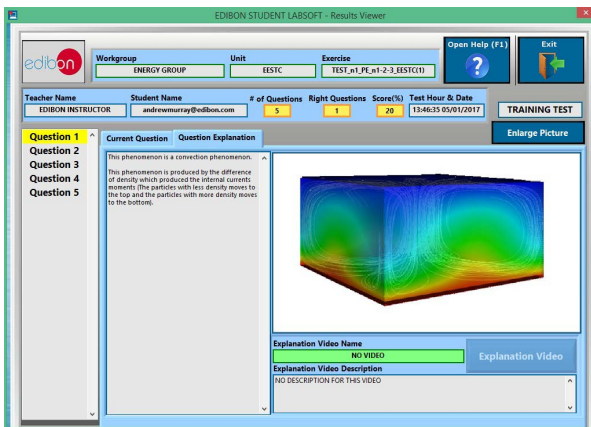
For more information see ICAI catalogue. Click on the following link:
www.edibon.com/en/interactive-computer-aided-instruction-software



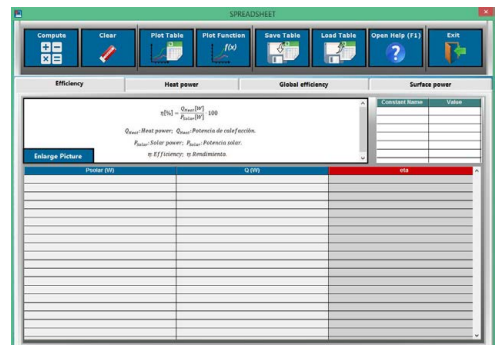
ESL-SOF. EDIBON Student LabSoft (Student Software)
Application Main Screen



EPE. EDIBON Practical Exercise Program Package Main Screen



ERS. EDIBON Results & Statistics Program Package - Question Explanation



ECAL. EDIBON Calculations Program Package Main Screen

* Specifications subject to change without previous notice, due to the convenience of improvement of the product.



C/ Julio Cervera, 10. Móstoles Tecnológico.
28935 MÓSTOLES. (Madrid). ESPAÑA - SPAIN.
Tel.: 34-91-6199363 Fax: 34-91-6198647
E-mail: edibon@edibon.com Web: www.edibon.com

Edition: ED01/23
Date: October/2023

REPRESENTATIVE:



Via delle Industrie, 71/A, 20864 Agrate Brianza (MB), Italia
Tel. 02 9574 9032
Email info@tsa-av.com
Web: www.tsa-av.com